

TOSHIBA Digital Integrated Circuit Silicon Monolithic

T3GE9WBG

Dual Supply Bus Transceiver for SD Card

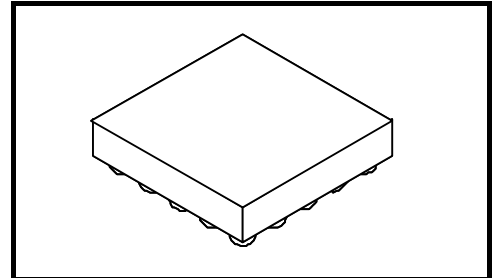
The T3GE9WBG is a dual supply, advanced high-speed CMOS dual supply voltage interface bus transceiver fabricated with silicon gate CMOS technology.

Designed for use as an interface between a 1.8-V bus and a 2.9-V bus in mixed 1.8-V/2.9-V supply systems.

The A-port interfaces with the 1.8-V bus, the B-port with the 2.9-V bus.

The direction of data transmission is determined by the level of the DIR input.

All inputs are equipped with protection circuits against static discharge or transient excess voltage.



Weight: 0.006 g (typ.)

Features

Bidirectional interface between 1.8-V and 2.9-V buses.

High-speed operation : $t_{pd} = 8.5 \text{ ns (max)}$ ($V_{CCA} = 1.8 \pm 0.15 \text{ V}$, $V_{CCB} = 2.9 \pm 0.1 \text{ V}$)

Output current : $I_{OHB}/I_{OLB} = \pm 6 \text{ mA (min)}$ ($V_{CCB} = 2.8 \text{ V}$)
 $I_{OHA}/I_{OLA} = \pm 6 \text{ mA (min)}$ ($V_{CCA} = 1.65 \text{ V}$)

Regulator output current: 200mA (min)

Integrated EMI filter on B-port

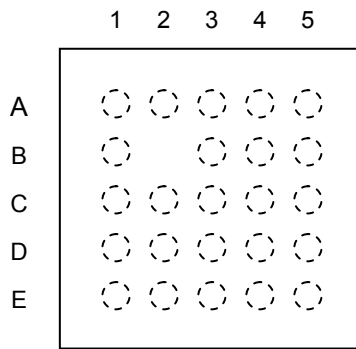
Integrated Pull-up and Pull-down resistors on B-port

Latch-up performance : $\pm 200 \text{ mA}$

ESD performance : Machine model $> \pm 200 \text{ V}$
Human body model $> \pm 2000 \text{ V}$
IEC61000-4-2 Level 4 (Contact) $> \pm 8000 \text{ V}$ (SD card side)

Ultra-small package : WCSP24

Pin Assignment (top view)



(Top view)

	1	2	3	4	5
A	Dat2.h	CMD-dir	Dat0-dir	V _{Batt}	Dat2-B
B	Dat3.h	--	V _{CCA}	V _{CCB} O/P	Dat3-B
C	Clk.h	Enable	GND	GND	CLK-B
D	Dat0.h	CMD.h	CD	CMD-B	Dat0-B
E	Dat1.h	Clk-f	Dat123-dir	WP	Dat1-B

Truth Table

Input	Outputs	
Clk.h	Clk-f	CLK-B
L	L	L
H	H	H

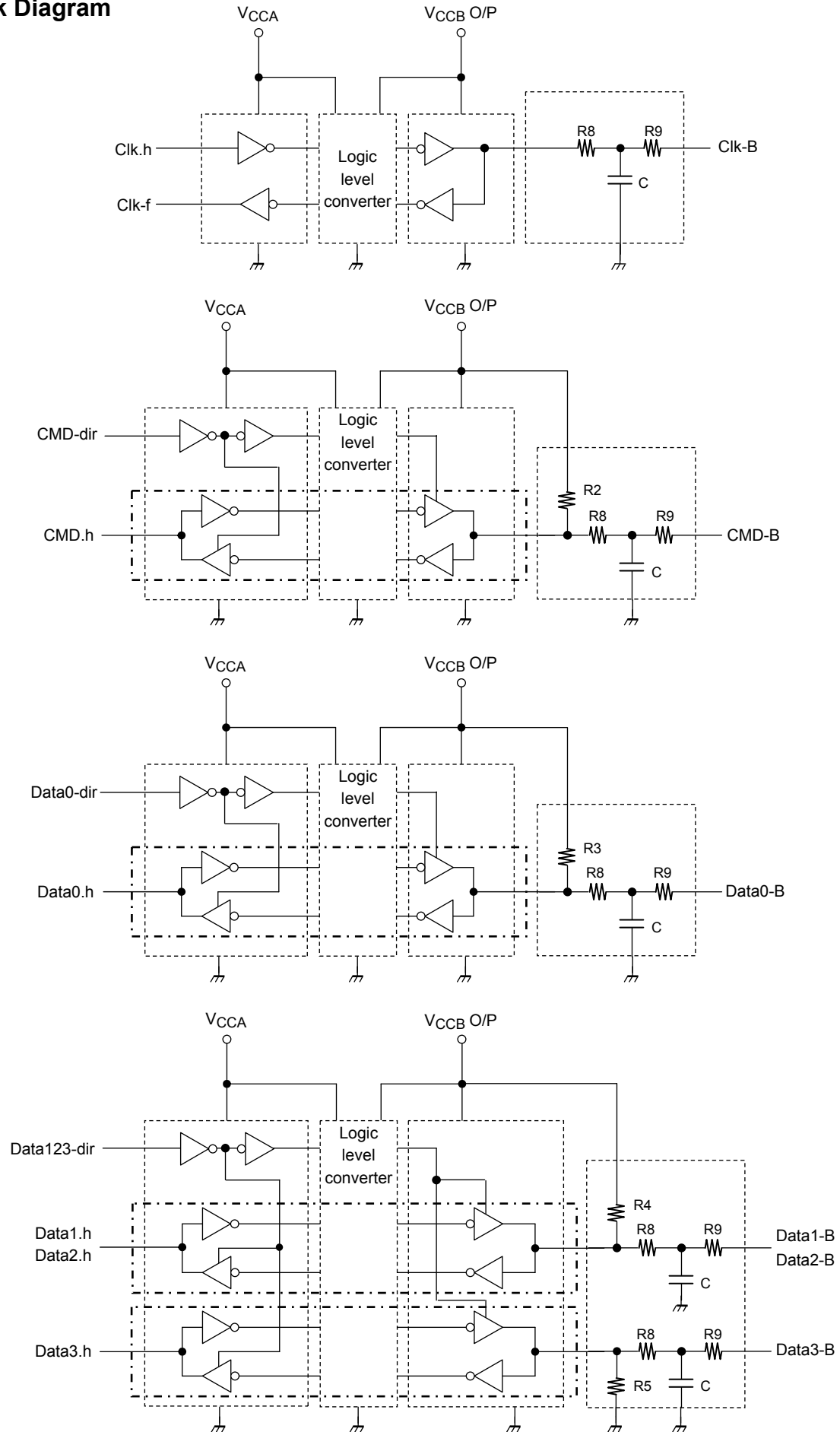
Inputs	Function		Outputs
CMD-dir	CMD.h	CMD-B	
L	Output	Input	CMD.h = CMD-B
H	Input	Output	CMD-B = CMD.h

Inputs	Function		Outputs
Dat0-dir	Dat0.h	Dat0-B	
L	Output	Input	Dat0.h = Dat0-B
H	Input	Output	Dat0-B = Dat0.h

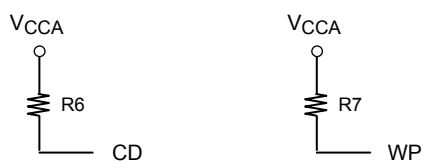
Inputs	Function		Outputs
Dat123-dir	Dat1.h – Dat3.h	Dat1-B – Dat3-B	
L	Output	Input	Datn.h = Datn-B
H	Input	Output	Datn-B = Datn.h

Input	Output
Enable	Regulator
L	OFF
H	ON

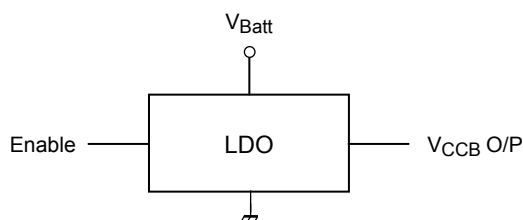
Block Diagram



Block Diagram



Symbol	Value (typ)
R3, R4	70kΩ
R2	15kΩ
R5	470kΩ
R6, R7	100kΩ
R8	5Ω
R9	35Ω
C	35pF



Absolute Maximum Ratings (Note 1)

Characteristics		Symbol	Rating	Unit
Power supply voltage		V_{CCA}	-0.5 to 3.0	V
		V_{Batt}	5.5	
DC input voltage	DIR, Clk.h	V_{IN}	-0.5 to $V_{CCA} + 0.5$	V
	Enable		-0.5 to 5.5	
DC bus I/O voltage		$V_{I/OA}$	-0.5 to $V_{CCA} + 0.5$ (Note 2)	V
		$V_{I/OB}$	-0.5 to $V_{CCB} + 0.5$ (Note 2)	
Input diode current	DIR, Clk.h	I_{IK}	±25	mA
	Enable		-25	
Output diode current		$I_{I/OK}$	±25 (Note 3)	mA
DC output current		I_{OUTA}	±25	mA
		I_{OUTB}	±25	
DC V_{CC} /ground current per supply pin		I_{CCA}	±50	mA
Power dissipation		P_D	400	mW
Storage temperature		T_{stg}	-55 to 150	°C

Note 1: Exceeding any of the absolute maximum ratings, even briefly, lead to deterioration in IC performance or even destruction.

Note 2: High or Low stats. I_{OUT} absolute maximum rating must be observed.

Note 3: $V_{OUT} < GND$, $V_{OUT} > V_{CC}$

Operating Range (Note 1)

Characteristics		Symbol	Rating	Unit
Power supply voltage		V_{CCA}	1.65 to 1.95	V
		V_{Batt}	3.2 to 5.0	
Input voltage	DIR, Clk.h	V_{IN}	0 to V_{CCA}	V
	Enable		0 to 5.0	
Bus I/O voltage		V_{IOA}	0 to V_{CCA} (Note 2)	V
		V_{IOB}	0 to V_{CCB} O/P (Note 2)	
Output current		I_{OUTA}	± 6 (Note 3)	mA
		I_{OUTB}	± 6 (Note 4)	
Operating temperature		T_{opr}	-30 to 85	$^{\circ}\text{C}$
Input rise and fall time		dt/dv	0 to 10 (Note 5)	ns/V

Note 1: The operating range is required to ensure the normal operation of the device. Unused inputs and bus inputs must be tied to either VCC or GND. Please connect both bus inputs and the bus outputs with VCC or GND when the I/O of the bus terminal changes by the function. In this case, please note that the output is not short-circuited.

Note 2: High or low state

Note 3: $V_{CCA} = 1.65$ to 1.95 V

Note 4: $V_{CCB} = 2.8$ to 3.0 V, V_{CCB} is supplied from the built-in LDO.

Note 5: $V_{CCA} = 1.65$ V, $V_{CCB} = 2.8$ V

Electrical Characteristics

DC Characteristics (1.65 V ≤ V_{CCA} ≤ 1.95 V, 2.8 V ≤ V_{CCB} ≤ 3.0 V)

Characteristics	Symbol	Test Condition	V _{CCA} (V)	V _{CCB} (V)	Ta = -30 to 85°C		Unit	
					Min	Max		
H-level input voltage	V _{IHA}	DIR, An (Note 1)	1.65 to 1.95	2.8 to 3.0	V _{CCA} × 0.65	—	V	
	V _{IHB}	Bn (Note 1)	1.65 to 1.95	2.8 to 3.0	2.0	—		
L-level input voltage	V _{ILA}	DIR, An (Note 1)	1.65 to 1.95	2.8 to 3.0	—	V _{CCA} × 0.35	V	
	V _{ILB}	Bn (Note 1)	1.65 to 1.95	2.8 to 3.0	—	0.8		
H-level output voltage	V _{OHA}	V _{IN} = V _{IH} or V _{IL}	I _{OHA} = -100 μA	1.65 to 1.95	2.8 to 3.0	V _{CCA} - 0.2	—	V
			I _{OHA} = -6 mA	1.65	2.8 to 3.0	1.15	—	
	V _{OHB}		I _{OHB} = -100 μA	1.65 to 1.95	2.8 to 3.0	V _{CCB} - 0.2	—	
			I _{OHB} = -6 mA	1.65 to 1.95	2.8	2.2	—	
L-level output voltage	V _{OLA}	V _{IN} = V _{IH} or V _{IL}	I _{OLA} = 100 μA	1.65 to 1.95	2.8 to 3.0	—	0.2	V
			I _{OLA} = 6 mA	1.65	2.8 to 3.0	—	0.3	
	V _{OLB}		I _{OLB} = 100 μA	1.65 to 1.95	2.8 to 3.0	—	0.2	
			I _{OLB} = 6 mA	1.65 to 1.95	2.8	—	0.4	
Input leakage current	I _{IA}	V _{INA} = V _{CCA} or GND DIR = HIGH V _{CD} = V _{WP} = V _{CCA}	1.65 to 1.95	2.8 to 3.0	—	±5.0	μA	
	I _{IB}	V _{CMD-B} , DAT0, DAT1, DAT2 = V _{CCA} V _{DAT3} = GND DIR = LOW V _{CD} = V _{WP} = V _{CCA}	1.65 to 1.95	2.8 to 3.0	—	±5.0		
Quiescent supply current	I _{CCA}	V _{INA} = V _{CCA} or GND DIR = HIGH V _{CD} = V _{WP} = V _{CCA}	1.65 to 1.95	2.8 to 3.0	—	20	μA	

Note 1: An is a host side signal. Bn is a card side signal.

Note: V_{CCB} is supplied from the built-in LDO.

AC Characteristics (Ta = -30 to 85°C, Input: tr = tf = 2.0 ns)

VCCA = 1.8 ± 0.15 V, VCCB = 2.9 ± 0.1 V

Characteristics	Symbol	Test Condition	Min	Typ.	Max	Unit
Propagation delay time (Bn → An)	t _{pLH} t _{pHL}	Figure 1, Figure 2	1.0	—	8.5	ns
Propagation delay time (An → Bn)	t _{pLH} t _{pHL}	Figure 1, Figure 2	1.0	—	8.5	ns
Propagation delay time (Clk.h → Clk-f)	t _{pLH} t _{pHL}	Figure 1, Figure 2	1.0	—	14	ns
Output Transition Time (An)	t _{TLH} t _{THL}	Figure 1, Figure 2	—	1.5	—	ns
Output Transition Time (Bn)	t _{TLH} t _{THL}	Figure 1, Figure 2	—	1.5	—	ns
Output to output skew	t _{osLH} t _{osHL}	(Note 1)	—	—	0.5	ns

Note 1: Parameter guaranteed by design. (t_{osLH} = |t_{pLHm} - t_{pLHn}|, t_{osHL} = |t_{pHLm} - t_{pHLn}|)

Note: An is a host side signal. Bn is a card side signal.

VCCB is supplied from the built-in LDO.

Dynamic Switching Characteristics (Ta = 25°C, Input: tr = tf = 2.0 ns, CL = 15 pF)

Characteristics	Symbol	Test Condition	V _{CCA} (V)		Typ.	Unit
			V _{CCA} (V)	V _{CCB} (V)		
Quiet output maximum dynamic V _{OL}	A → B	V _{IH} = V _{CC} , V _{IL} = 0 V (Note 2)	1.8	2.9	0.35	V
	B → A		1.8	2.9	0.25	
Quiet output minimum dynamic V _{OL}	A → B	V _{IH} = V _{CC} , V _{IL} = 0 V (Note 2)	1.8	2.9	-0.35	V
	B → A		1.8	2.9	-0.25	
Quiet output maximum dynamic V _{OH}	A → B	V _{IH} = V _{CC} , V _{IL} = 0 V (Note 2)	1.8	2.9	3.25	V
	B → A		1.8	2.9	2.05	
Quiet output minimum dynamic V _{OH}	A → B	V _{IH} = V _{CC} , V _{IL} = 0 V (Note 2)	1.8	2.9	2.55	V
	B → A		1.8	2.9	1.55	

Note 2: Parameter guaranteed by design.

Note: An is a host side signal. Bn is a card side signal.

Capacitive Characteristics (Ta = 25°C)

Characteristics	Symbol	Test Circuit	V _{CCA} (V)		Typ.	Unit
			V _{CCA} (V)	V _{CCB} (V)		
Power dissipation capacitance (Note 3)	C _{PD} A	A → B (DIR = "H")	1.8	2.9	24	pF
		B → A (DIR = "L")	1.8	2.9	22	
	C _{PD} B	A → B (DIR = "H")	1.8	2.9	76	
		B → A (DIR = "L")	1.8	2.9	28	

Note 3: C_{PD} is defined as the value of the internal equivalent capacitance which is calculated from the operating current consumption without load.

Average operating current can be obtained by the equation:

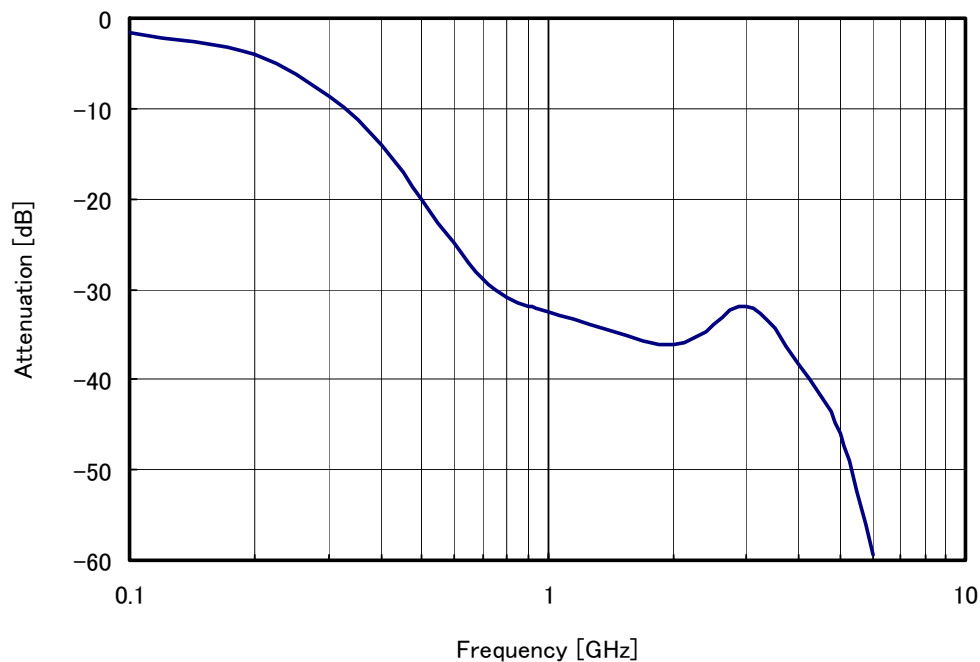
$$I_{CC(opr)} = C_{PD} \cdot V_{CC} \cdot f_{IN} + I_{CC}/6 \text{ (per bit)}$$

Regulator Section

Electrical Characteristics (unless otherwise specified, $V_{IN} = V_{OUT} + 1\text{ V}$, $I_{OUT} = 1\text{ mA}$, $C_{IN} = 0.1\text{ }\mu\text{F}$, $C_{OUT} = 2.2\text{ }\mu\text{F}$, $T_j = 25^\circ\text{C}$)

Characteristics	Symbol	Test Condition	Min	Typ.	Max	Unit
Input voltage	V_{IN}	—	3.2	—	5.0	V
Output voltage	$V_{CCB\ O/P}$	—	2.8	2.9	3.0	V
Line regulation	Reg·line	$V_{OUT} + 0.5\text{ V} \leq V_{IN} \leq 5.0\text{ V}$, $I_{OUT} = 1\text{ mA}$	—	3	15	mV
Load regulation	Reg·load	$1\text{ mA} \leq I_{OUT} \leq 200\text{ mA}$	—	—	150	mV
Quiescent current	I_{B1}	$I_{OUT} = 0\text{ mA}$	—	40	80	μA
	I_{B2}	$I_{OUT} = 100\text{ mA}$	—	45	85	
Stand-by current	$I_B\ (OFF)$	$V_{CT} = 0\text{ V}$	—	0.1	1.0	μA
Output noise voltage	V_{NO}	$V_{IN} = V_{OUT} + 1\text{ V}$, $I_{OUT} = 10\text{ mA}$, $10\text{ Hz} \leq f \leq 100\text{ kHz}$, $T_a = 25^\circ\text{C}$	—	140	—	μV_{rms}
Temperature coefficient	T_{CVO}	$-40^\circ\text{C} \leq T_{opr} \leq 85^\circ\text{C}$	—	100	—	ppm/ $^\circ\text{C}$
Ripple rejection	R.R.	$V_{IN} = V_{OUT} + 1\text{ V}$, $I_{OUT} = 10\text{ mA}$, $f = 1\text{ kHz}$, $V_{Ripple} = 500\text{ mV}_{p-p}$, $T_a = 25^\circ\text{C}$	—	40	—	dB
Control voltage (ON)	$V_{CT}\ (ON)$	—	1.5	—	V_{IN}	V
Control voltage (OFF)	$V_{CT}\ (OFF)$	—	0	—	0.25	V
Control current (ON)	$I_{CT}\ (ON)$	$V_{CT} = 1.5\text{ V}$	—	—	0.1	μA
Control current (OFF)	$I_{CT}\ (OFF)$	$V_{CT} = 0\text{ V}$	—	—	0.1	μA
Peak output current	$I_{outpeak}$	—	200	—	—	mA

EMI Filter Response (Typical Performance)



AC Test Circuit

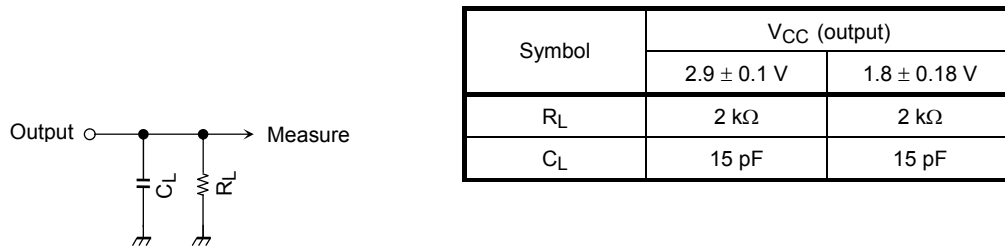


Figure 1

AC Waveform

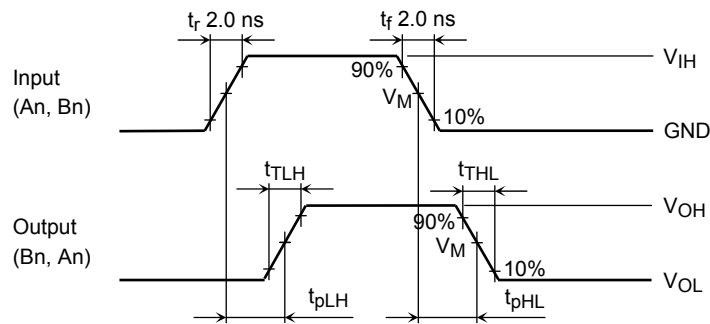


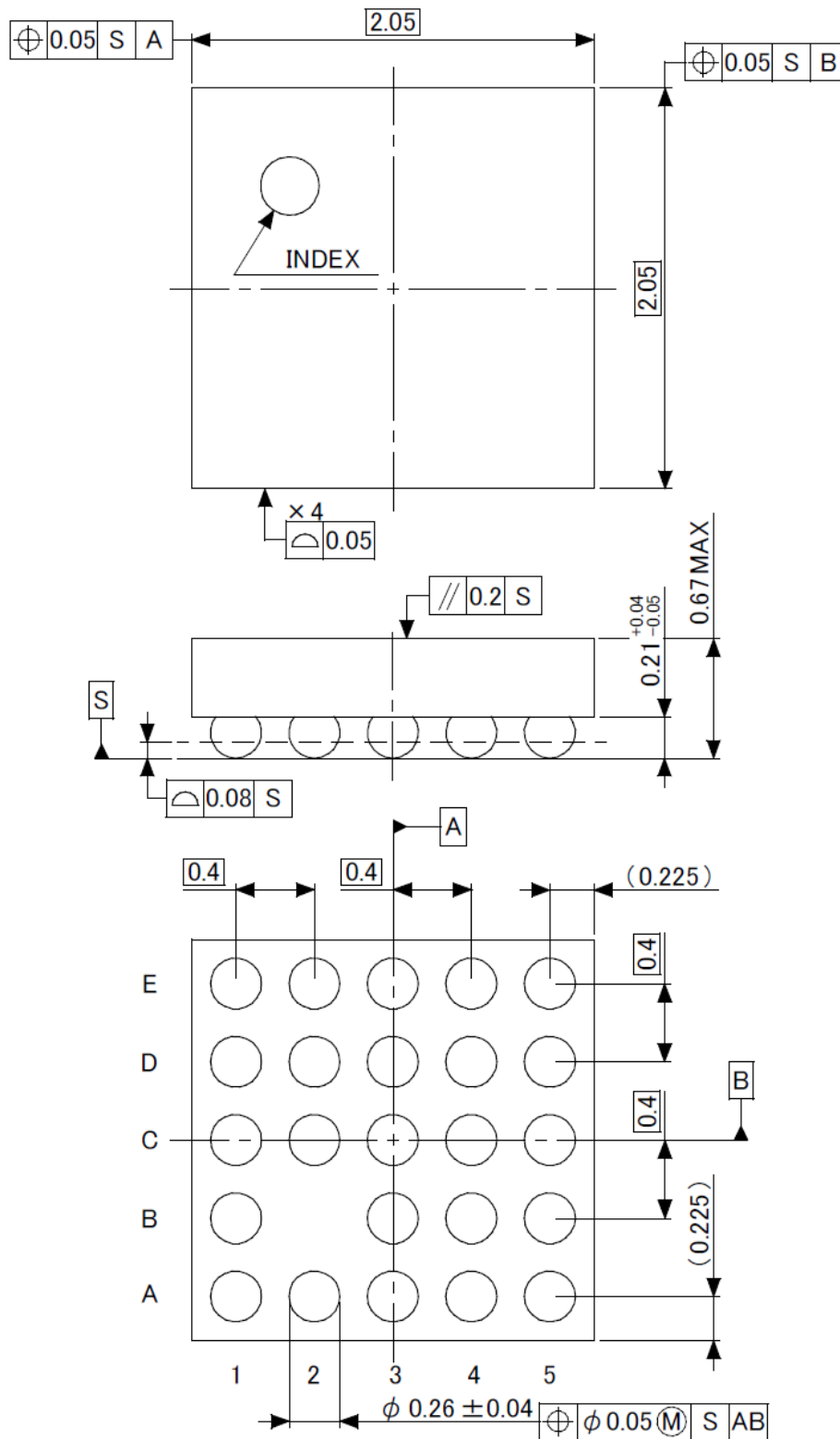
Figure 2 t_{pLH}, t_{pHL}, t_{tLH}, t_{tHL}

Symbol	V _{CC}	
	2.9 ± 0.1 V	1.8 ± 0.18 V
V _{IH}	V _{CC}	V _{CC}
V _M	V _{CC} /2	V _{CC} /2

Package Dimensions

S-WFBGA24-0303-0.40A02

Unit: mm



Weight: 0.006 g (typ.)

The resin used in this product includes no flame retardants.

RESTRICTIONS ON PRODUCT USE

- Toshiba Corporation, and its subsidiaries and affiliates (collectively "TOSHIBA"), reserve the right to make changes to the information in this document, and related hardware, software and systems (collectively "Product") without notice.
- This document and any information herein may not be reproduced without prior written permission from TOSHIBA. Even with TOSHIBA's written permission, reproduction is permissible only if reproduction is without alteration/omission.
- Though TOSHIBA works continually to improve Product's quality and reliability, Product can malfunction or fail. Customers are responsible for complying with safety standards and for providing adequate designs and safeguards for their hardware, software and systems which minimize risk and avoid situations in which a malfunction or failure of Product could cause loss of human life, bodily injury or damage to property, including data loss or corruption. Before creating and producing designs and using, customers must also refer to and comply with (a) the latest versions of all relevant TOSHIBA information, including without limitation, this document, the specifications, the data sheets and application notes for Product and the precautions and conditions set forth in the "TOSHIBA Semiconductor Reliability Handbook" and (b) the instructions for the application that Product will be used with or for. Customers are solely responsible for all aspects of their own product design or applications, including but not limited to (a) determining the appropriateness of the use of this Product in such design or applications; (b) evaluating and determining the applicability of any information contained in this document, or in charts, diagrams, programs, algorithms, sample application circuits, or any other referenced documents; and (c) validating all operating parameters for such designs and applications. **TOSHIBA ASSUMES NO LIABILITY FOR CUSTOMERS' PRODUCT DESIGN OR APPLICATIONS.**
- Product is intended for use in general electronics applications (e.g., computers, personal equipment, office equipment, measuring equipment, industrial robots and home electronics appliances) or for specific applications as expressly stated in this document. Product is neither intended nor warranted for use in equipment or systems that require extraordinarily high levels of quality and/or reliability and/or a malfunction or failure of which may cause loss of human life, bodily injury, serious property damage or serious public impact ("Unintended Use"). Unintended Use includes, without limitation, equipment used in nuclear facilities, equipment used in the aerospace industry, medical equipment, equipment used for automobiles, trains, ships and other transportation, traffic signaling equipment, equipment used to control combustions or explosions, safety devices, elevators and escalators, devices related to electric power, and equipment used in finance-related fields. Do not use Product for Unintended Use unless specifically permitted in this document.
- Do not disassemble, analyze, reverse-engineer, alter, modify, translate or copy Product, whether in whole or in part.
- Product shall not be used for or incorporated into any products or systems whose manufacture, use, or sale is prohibited under any applicable laws or regulations.
- The information contained herein is presented only as guidance for Product use. No responsibility is assumed by TOSHIBA for any infringement of patents or any other intellectual property rights of third parties that may result from the use of Product. No license to any intellectual property right is granted by this document, whether express or implied, by estoppel or otherwise.
- **ABSENT A WRITTEN SIGNED AGREEMENT, EXCEPT AS PROVIDED IN THE RELEVANT TERMS AND CONDITIONS OF SALE FOR PRODUCT, AND TO THE MAXIMUM EXTENT ALLOWABLE BY LAW, TOSHIBA (1) ASSUMES NO LIABILITY WHATSOEVER, INCLUDING WITHOUT LIMITATION, INDIRECT, CONSEQUENTIAL, SPECIAL, OR INCIDENTAL DAMAGES OR LOSS, INCLUDING WITHOUT LIMITATION, LOSS OF PROFITS, LOSS OF OPPORTUNITIES, BUSINESS INTERRUPTION AND LOSS OF DATA, AND (2) DISCLAIMS ANY AND ALL EXPRESS OR IMPLIED WARRANTIES AND CONDITIONS RELATED TO SALE, USE OF PRODUCT, OR INFORMATION, INCLUDING WARRANTIES OR CONDITIONS OF MERCHANTABILITY, FITNESS FOR A PARTICULAR PURPOSE, ACCURACY OF INFORMATION, OR NONINFRINGEMENT.**
- Do not use or otherwise make available Product or related software or technology for any military purposes, including without limitation, for the design, development, use, stockpiling or manufacturing of nuclear, chemical, or biological weapons or missile technology products (mass destruction weapons). Product and related software and technology may be controlled under the Japanese Foreign Exchange and Foreign Trade Law and the U.S. Export Administration Regulations. Export and re-export of Product or related software or technology are strictly prohibited except in compliance with all applicable export laws and regulations.
- Please contact your TOSHIBA sales representative for details as to environmental matters such as the RoHS compatibility of Product. Please use Product in compliance with all applicable laws and regulations that regulate the inclusion or use of controlled substances, including without limitation, the EU RoHS Directive. TOSHIBA assumes no liability for damages or losses occurring as a result of noncompliance with applicable laws and regulations.