

# 3.2mm SQUARE ISOLATOR

## MODEL ESMI-3FCL 0836 M 01 - T

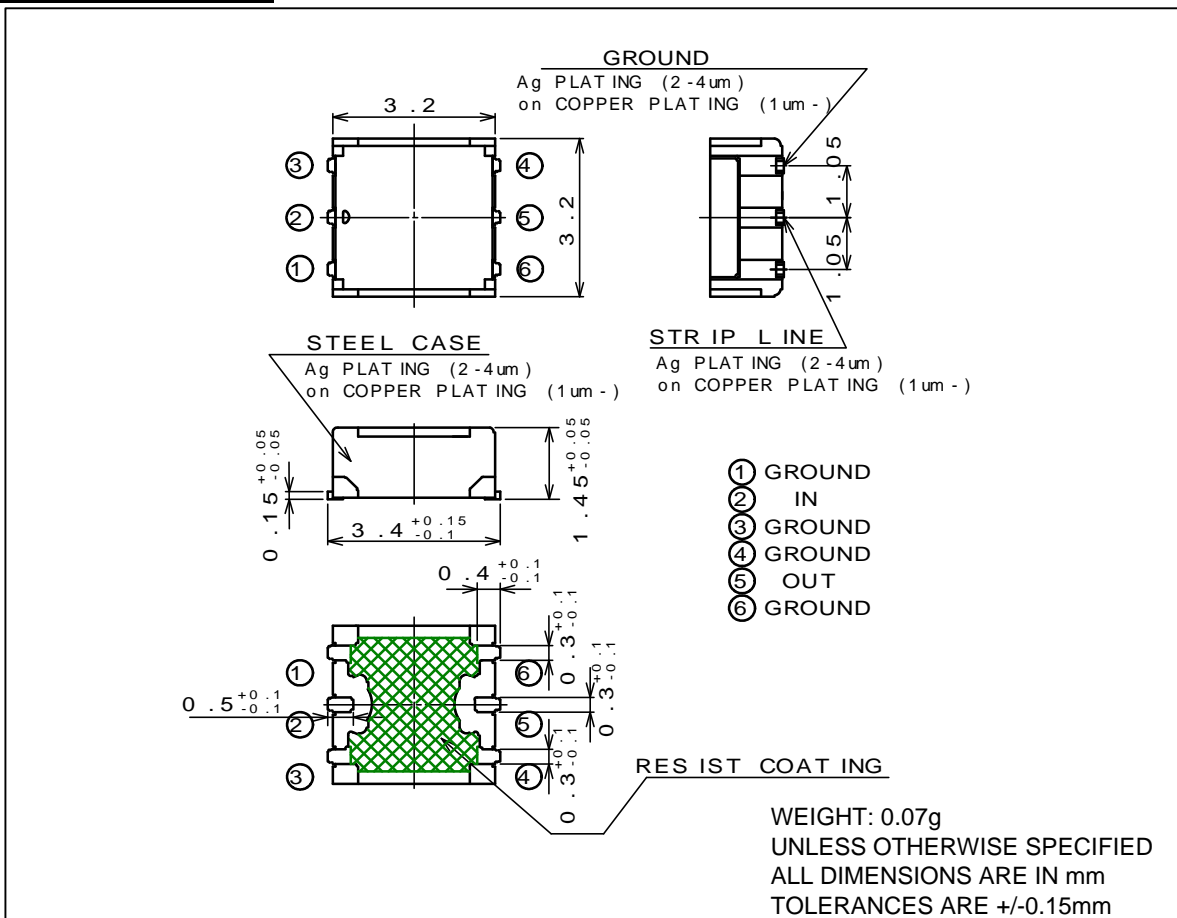
- (1) Series ESMI-3FCL : 1.5mm Height / 800-1000MHz
- (2) Center Frequency
- (3) M : MHz
- (4) Control No.
- (5) T : Taping  
Blank : Bulk

### Target Specification

Frequency (MHz)	Ins. Loss Max. (dB)	Isolation Min. (dB)	V.S.W.R. (IN) Max.	V.S.W.R. (OUT) Max.	Attenuation		Handling Power Max. (W)	Reflection Power Max. (W)
					at 2f Min. (dB)	at 3f Min. (dB)		
824-849	0.70	10	1.60	1.60	10	15	2.5	0.6

Operating Temperature(deg.C) ; -35 to +85  
Impedance ; 50 ohms Typ.

### Shape & Size



Note) This is tentative specifications under development.  
There is some possibility which the specifications might be modified including mechanical dimension.

