

SANYO

No.3179A

2SA1763

PNP Epitaxial Planar Silicon Transistor

High-Speed Switching Applications

Features

- Fast switching speed
- Low collector saturation voltage
- High gain-bandwidth product
- Small collector capacitance
- Very small-sized package permitting the 2SA1763-applied sets to be made small and slim
- Complementary pair with the 2SC4452

Absolute Maximum Ratings at $T_a = 25^\circ\text{C}$

			unit
Collector to Base Voltage	V_{CB0}	-15	V
Collector to Emitter Voltage	V_{CEO}	-15	V
Emitter to Base Voltage	V_{EBO}	-5	V
Collector Current	I_C	-200	mA
Collector Current(Pulse)	I_{CP}	-500	mA
Base Current	I_B	-40	mA
Collector Dissipation	P_C	150	mW
Junction Temperature	T_j	150	$^\circ\text{C}$
Storage Temperature	T_{stg}	-55 to +150	$^\circ\text{C}$

Electrical Characteristics at $T_a = 25^\circ\text{C}$

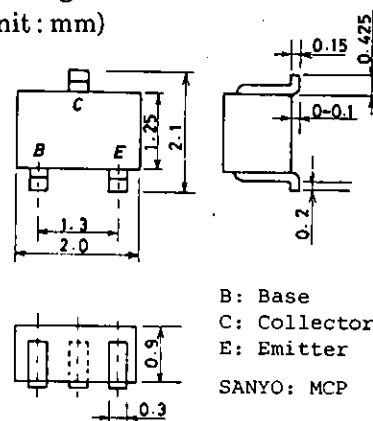
			min	typ	max	unit
Collector Cutoff Current	I_{CBO}	$V_{CB} = -8\text{V}, I_E = 0$			-0.1	μA
Emitter Cutoff Current	I_{EBO}	$V_{EB} = -3\text{V}, I_C = 0$			-0.1	μA
DC Current Gain	h_{FE}	$V_{CE} = -1\text{V}, I_C = -10\text{mA}$	50	80	140	
Gain-Bandwidth Product	f_T	$V_{CE} = -10\text{V}, I_C = -10\text{mA}$	450	1000		MHz
Output Capacitance	c_{ob}	$V_{CB} = -5\text{V}, f = 1\text{MHz}$		1.8	3.0	pF
C-E Saturation Voltage	$V_{CE(sat)}$	$I_C = -10\text{mA}, I_B = -1\text{mA}$	-0.07	-0.20		V
B-E Saturation Voltage	$V_{BE(sat)}$	$I_C = -10\text{mA}, I_B = -1\text{mA}$	-0.80	-0.85		V
C-B Breakdown Voltage	$V_{(BR)CBO}$	$I_C = -10\mu\text{A}, I_E = 0$	-15			V
C-E Breakdown Voltage	$V_{(BR)CEO}$	$I_C = -1\text{mA}, R_{BE} = \infty$	-15			V
E-B Breakdown Voltage	$V_{(BR)EBO}$	$I_E = -10\mu\text{A}, I_C = 0$	-5			V
Turn-ON Time	t_{on}	See specified Test Circuit.		11		ns
Storage Time	t_{stg}	"		21		ns
Turn-OFF Time	t_{off}	"		19		ns

Marking : FS

For the specified switching test circuit, see the next page.

Package Dimensions 2059

(unit : mm)

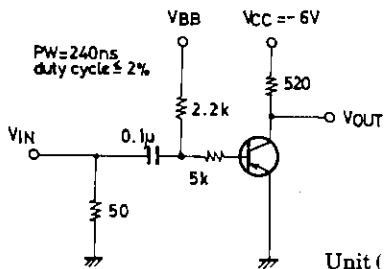
**SANYO Electric Co., Ltd. Semiconductor Business Headquarters**

TOKYO OFFICE Tokyo Bldg., 1-10, 1 Chome, Ueno, Taito-ku, TOKYO, 110 JAPAN

2SA1763

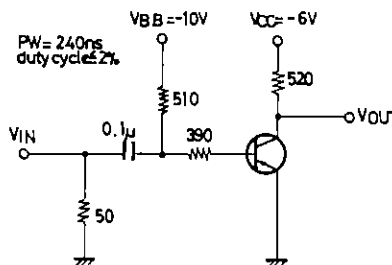
Switching Time Test Circuits

t_{on}, t_{off} Test Circuit



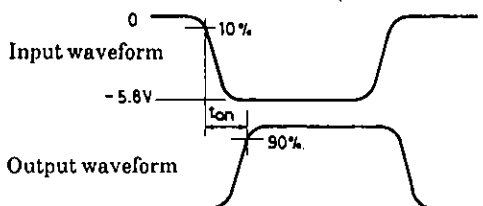
Unit (Resistance : Ω ,
Capacitance : F)

t_{stg} Test Circuit

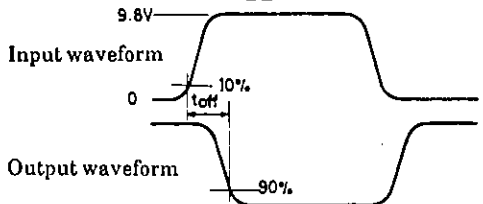


Unit (Resistance : Ω , Capacitance : F)

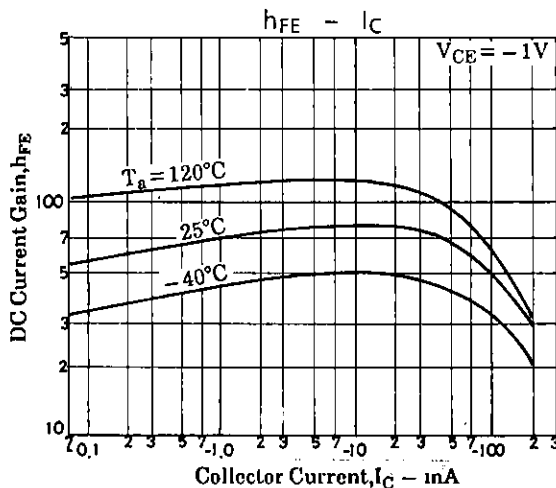
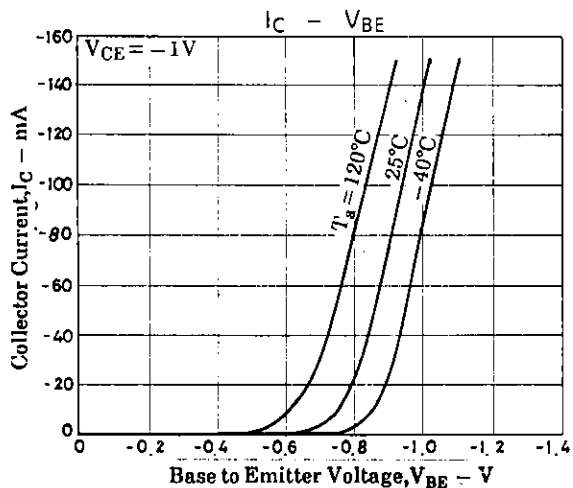
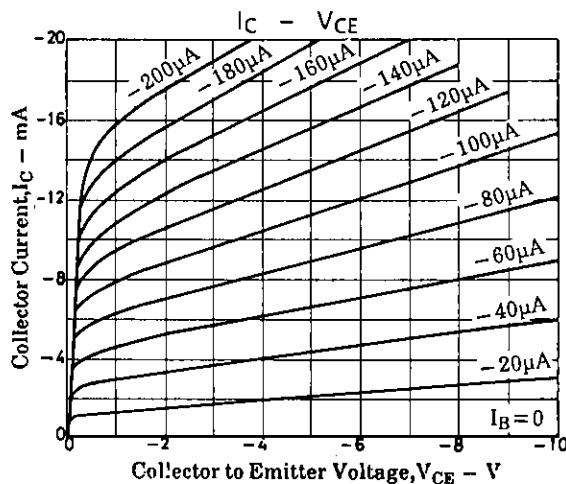
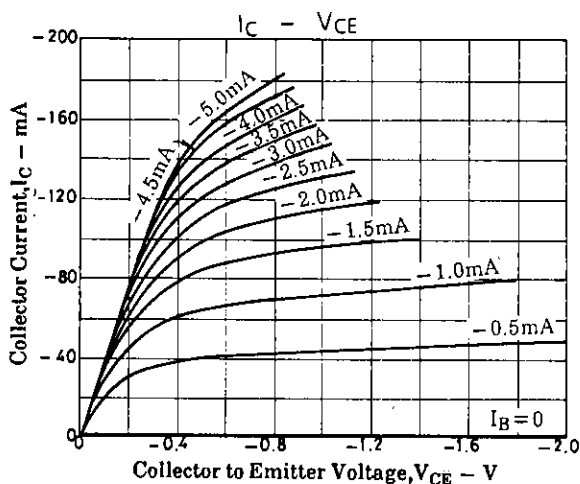
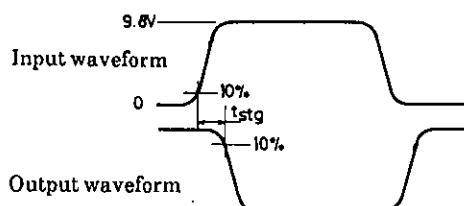
t_{on} Test Waveform ($V_{BB} = GND$)



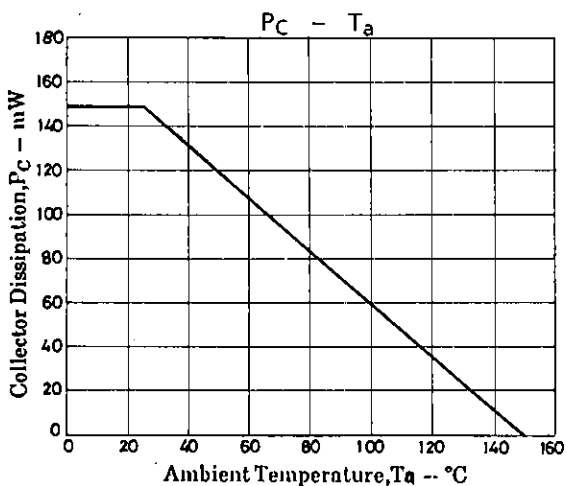
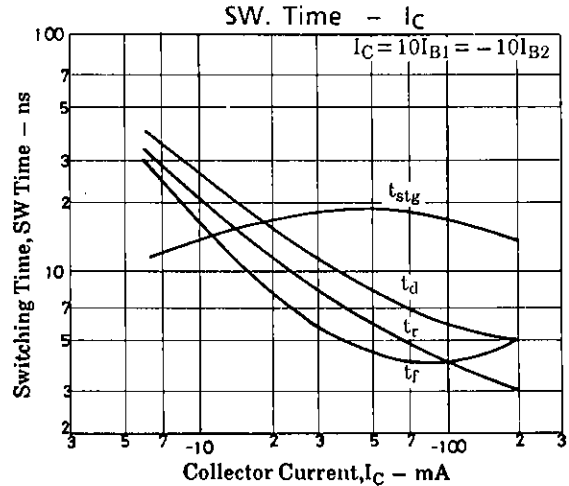
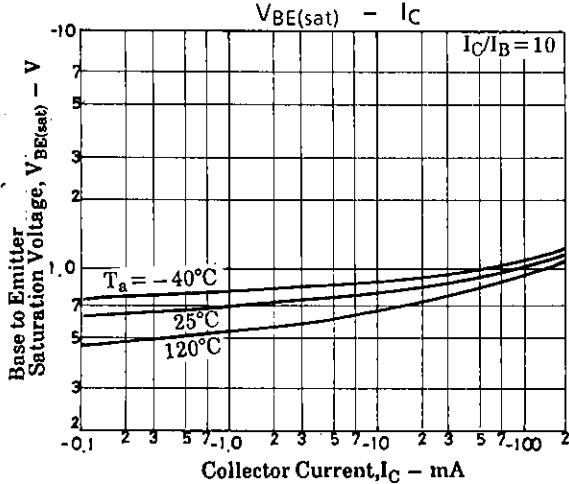
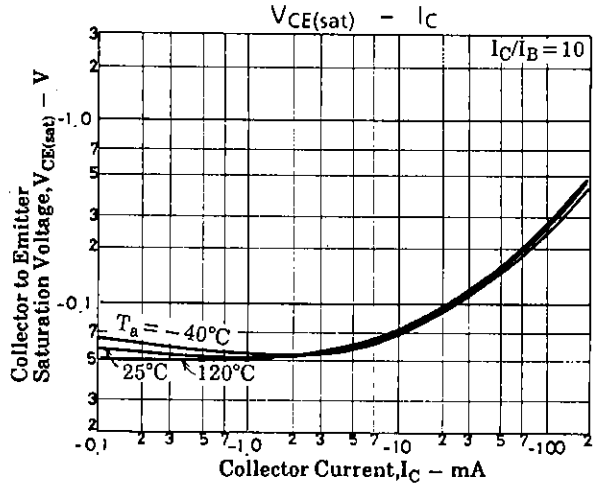
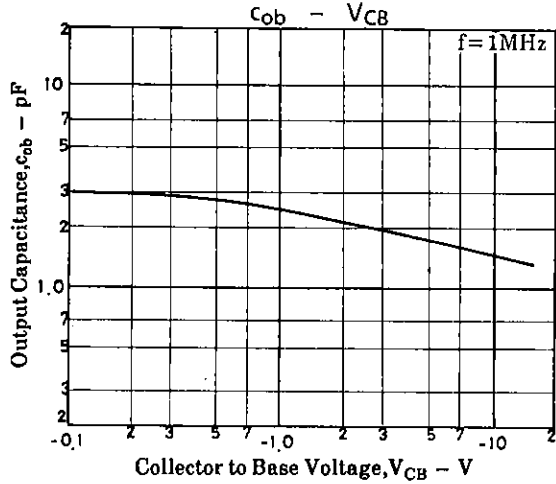
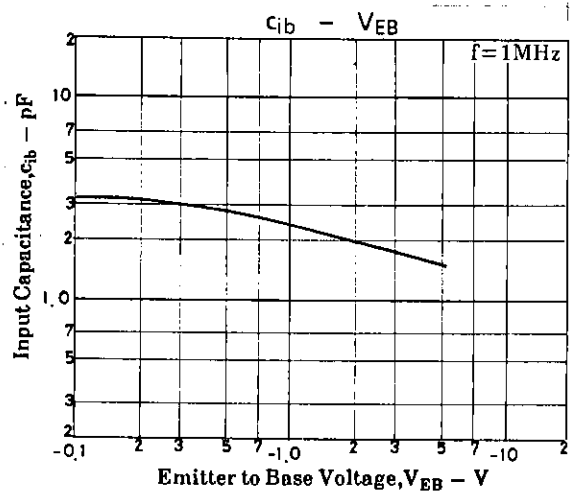
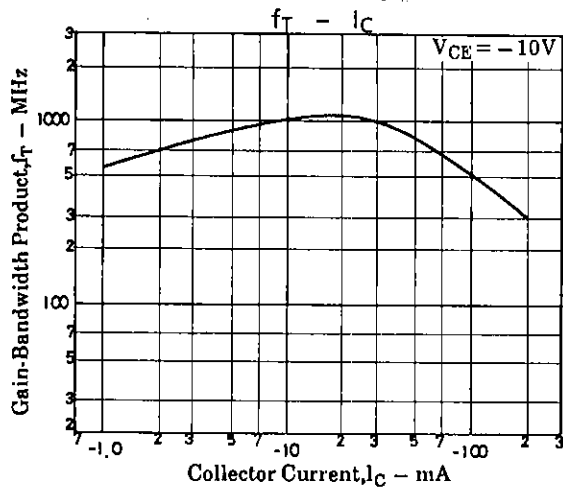
t_{off} Test Waveform ($V_{BB} = -8.0V$)



t_{stg} Test Waveform



2SA1763



- No products described or contained herein are intended for use in surgical implants, life-support systems, aerospace equipment, nuclear power control systems, vehicles, disaster/crime-prevention equipment and the like, the failure of which may directly or indirectly cause injury, death or property loss.
- Anyone purchasing any products described or contained herein for an above-mentioned use shall:
 - ① Accept full responsibility and indemnify and defend SANYO ELECTRIC CO., LTD., its affiliates, subsidiaries and distributors and all their officers and employees, jointly and severally, against any and all claims and litigation and all damages, cost and expenses associated with such use;
 - ② Not impose any responsibility for any fault or negligence which may be cited in any such claim or litigation on SANYO ELECTRIC CO., LTD., its affiliates, subsidiaries and distributors or any of their officers and employees jointly or severally.
- Information (including circuit diagrams and circuit parameters) herein is for example only; it is not guaranteed for volume production. SANYO believes information herein is accurate and reliable, but no guarantees are made or implied regarding its use or any infringements of intellectual property rights or other rights of third parties.